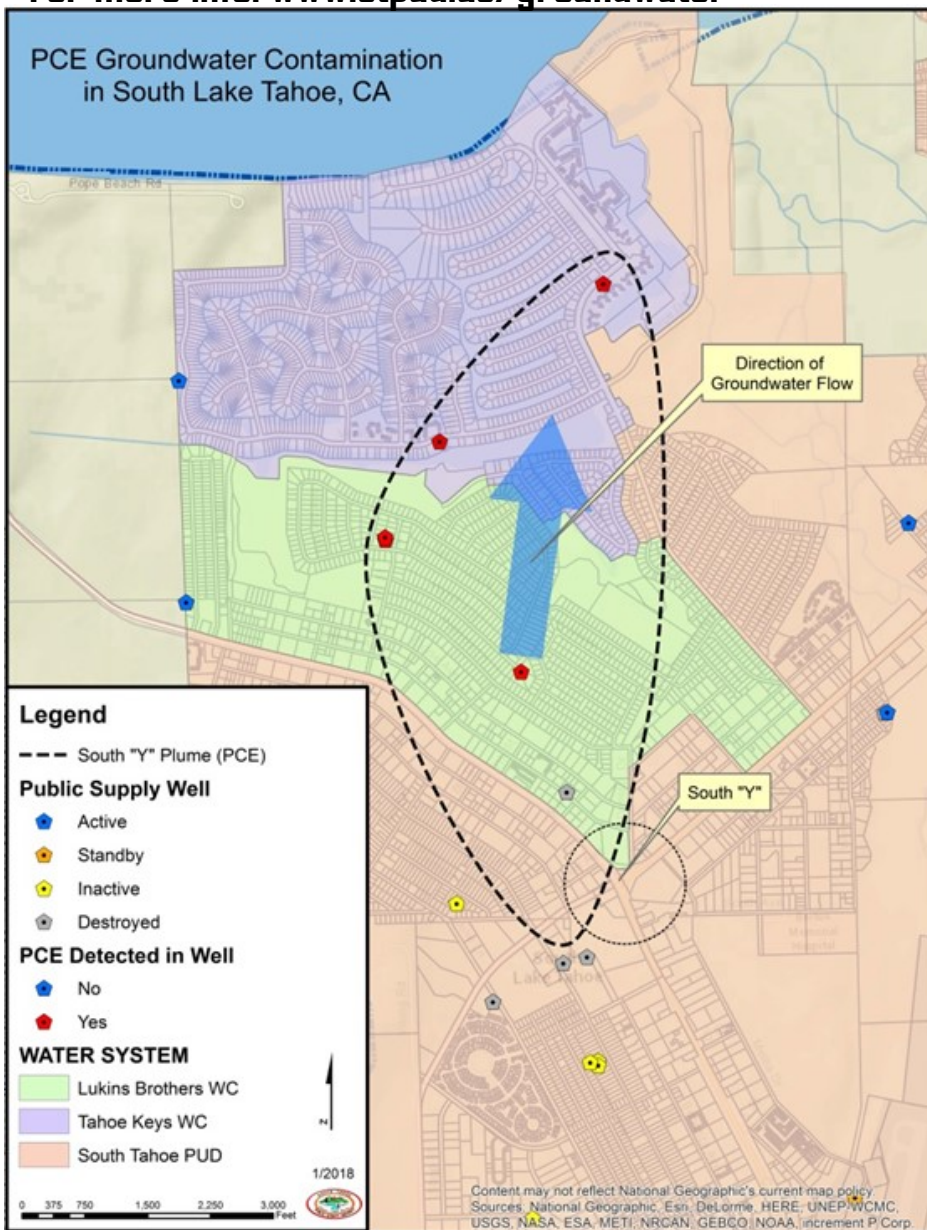


Groundwater Contamination at South Tahoe "Y"

Attend a follow-up meeting about the contaminant, PCE, found in our groundwater at the "Y" area in South Lake Tahoe. Find out what local water agencies are doing to make sure you have access to safe, clean drinking water.

For more info: www.stpud.us/groundwater



WEDNESDAY
June 26, 2019
6:00-7:30PM

**So Lake Tahoe Airport
City Council
Chambers**
1901 Airport Road

