

# Diamond Valley Ranch

---

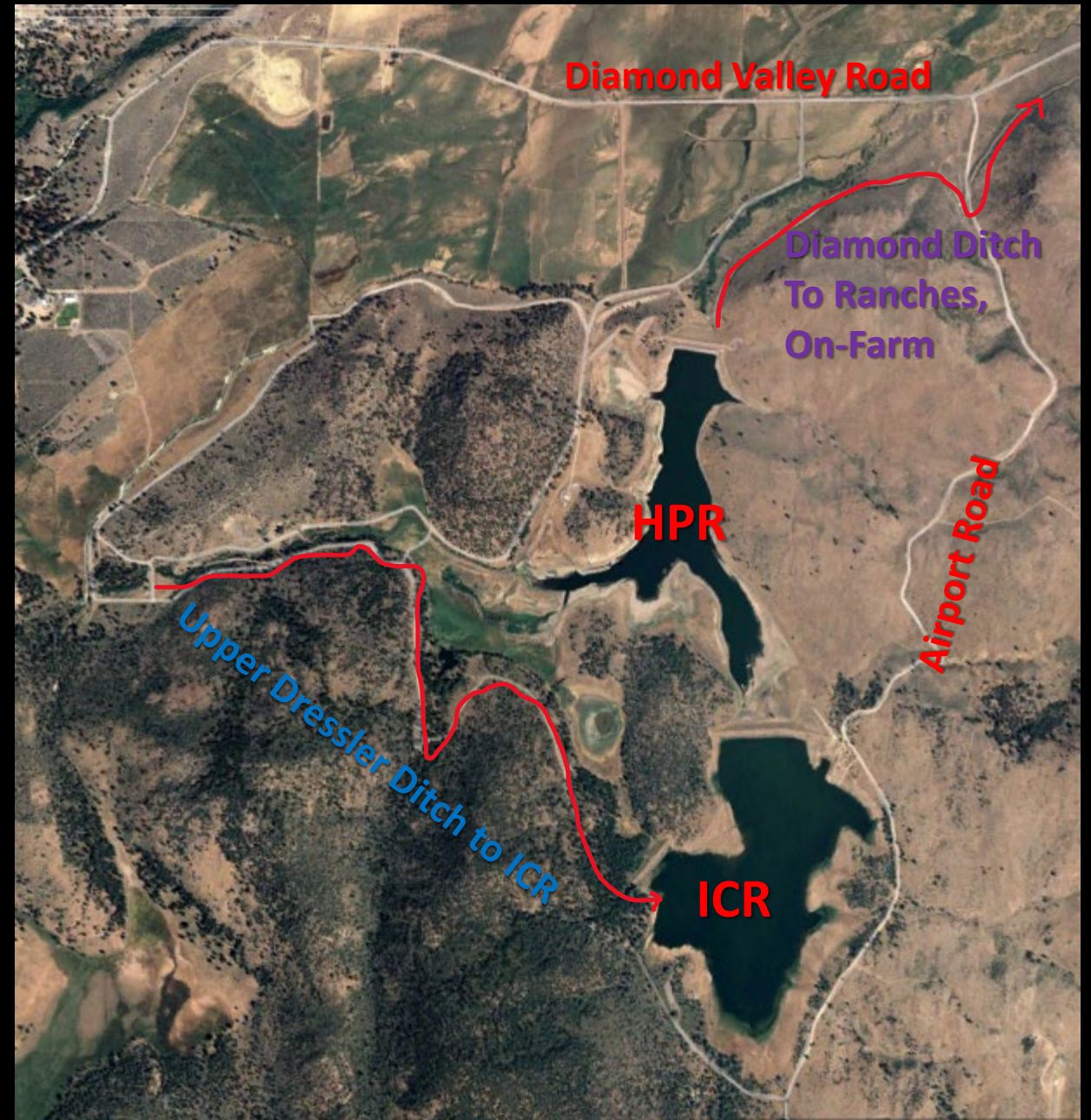
## El Dorado Storm Response

Status and Current Activities  
Trevor Coolidge - Senior Engineer  
April 6, 2023



# DVR Overview

- Harvey Place Reservoir
  - Releasing @ 5 cfs since April 1<sup>st</sup>
  - 5' below overflow, minimal level change
- Indian Creek Reservoir – 11 cfs flushing flow
- On-farm System - Emergency release location and conveyance to downstream ranches
- Ditches (canals), roads, and culverts impacted by heavy runoff, current debris removal & repair work





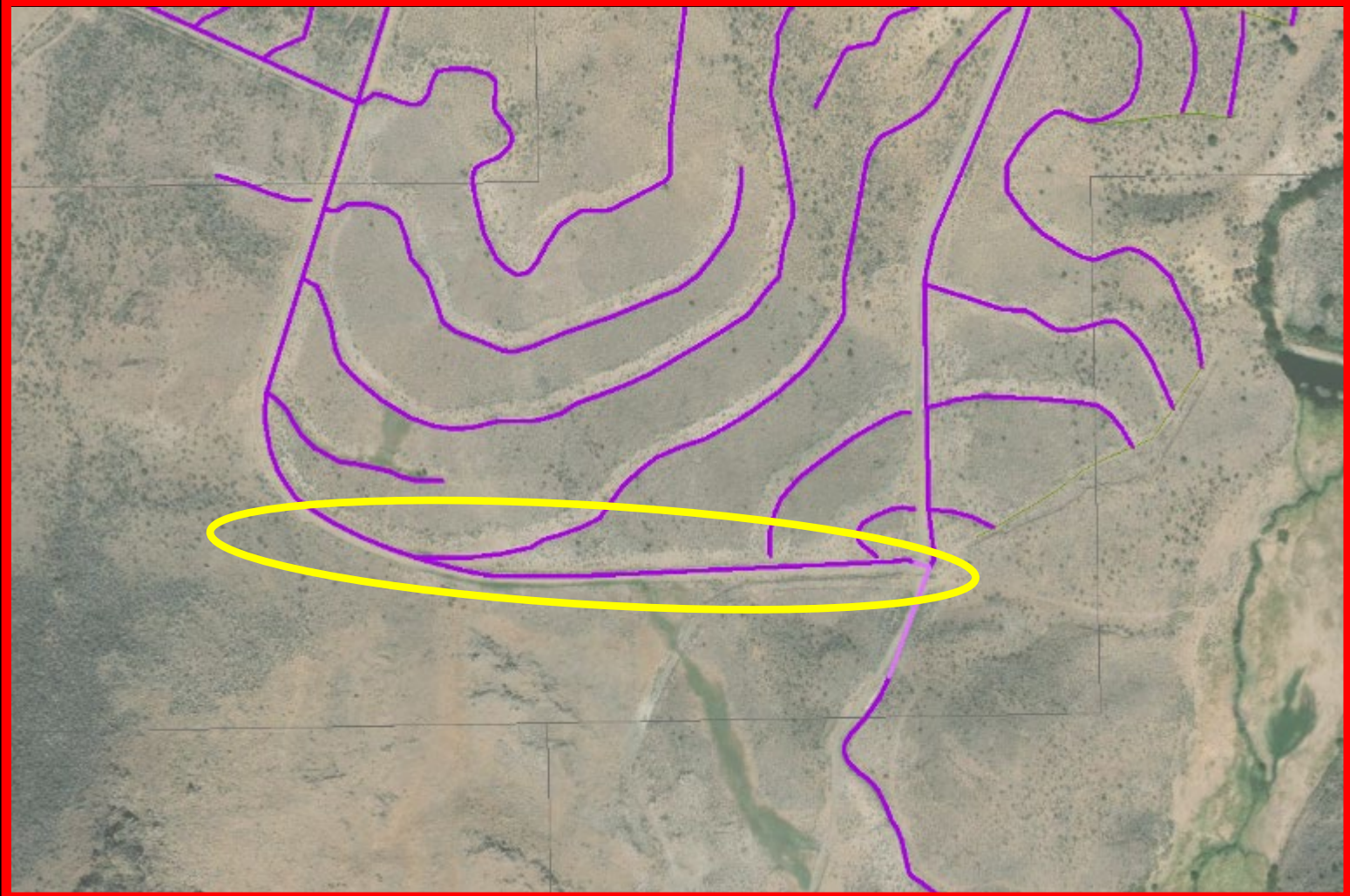
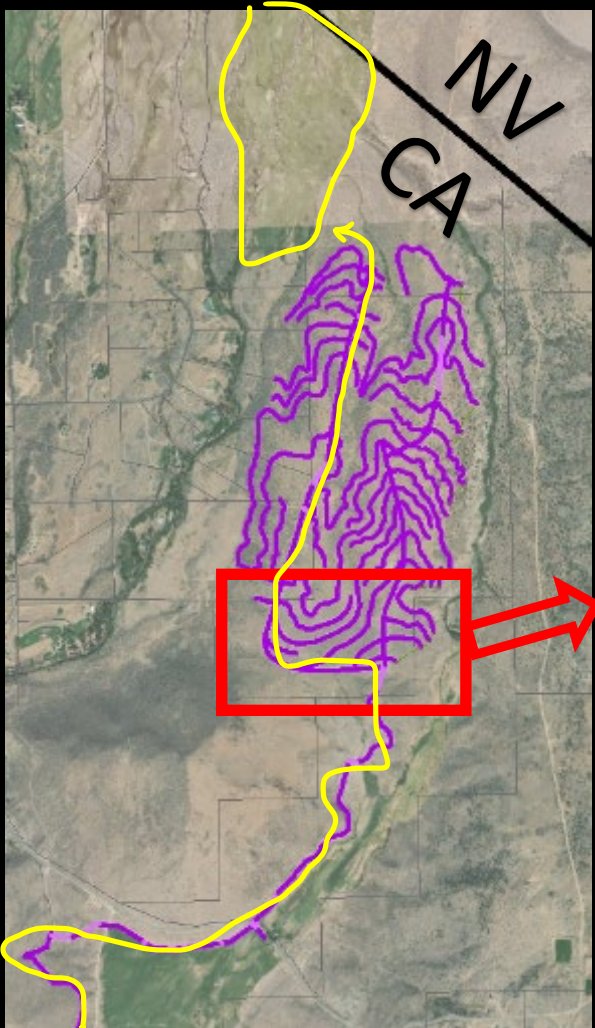
# Diamond Ditch

- Conveys recycled water from HPR
- Currently Restricted to 5 cfs, pending repair from snow removal work





# On-Farm System



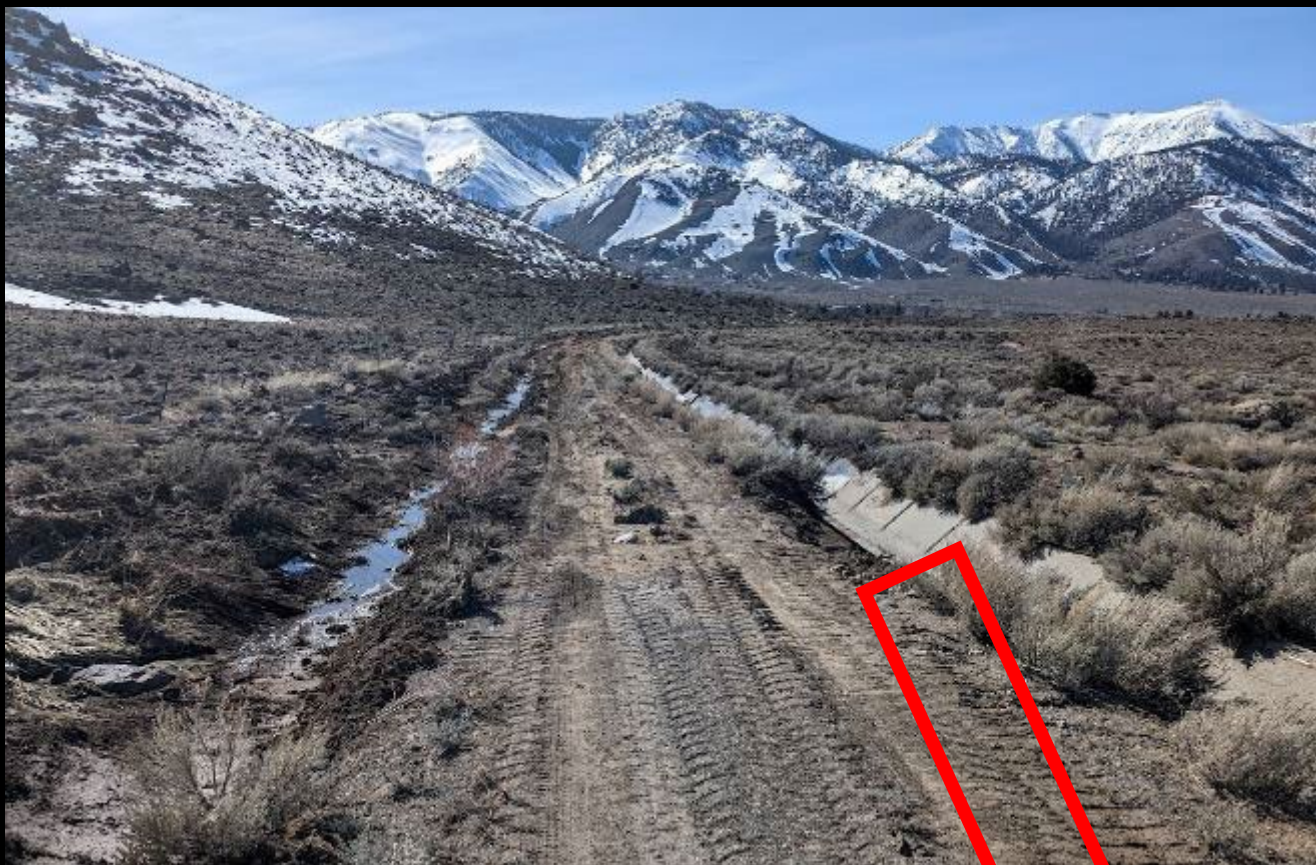


# On-Farm System

- Ditches, Canals
- Roads
- Monitoring Wells







On-Farm System





# On-Farm System





# Dressler Ditch

- Intercepts natural runoff, conveys freshwater to ICR
- Functioning, but major access road and drainage issues





# General DVR Erosion, Debris Issues – Ongoing Work

- District & Contractor Crews







Harvey Place Reservoir