

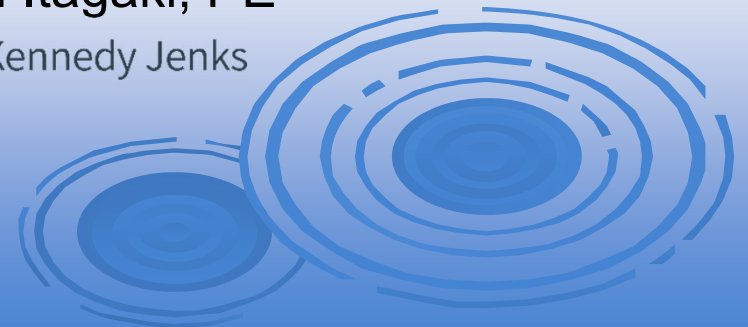
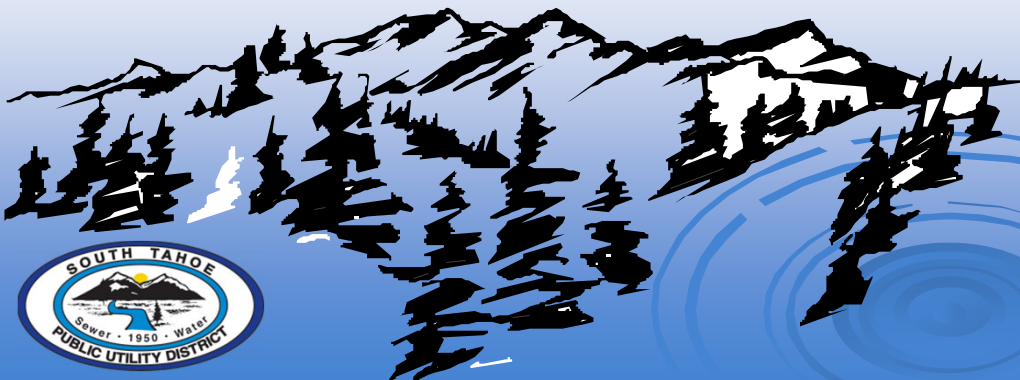
South Tahoe Public Utility District

TAHOE VALLEY SOUTH SUBBASIN (6-005.01) ANNUAL REPORT Water Year 2022

6 April 2023

Sachi Itagaki, PE

 Kennedy Jenks



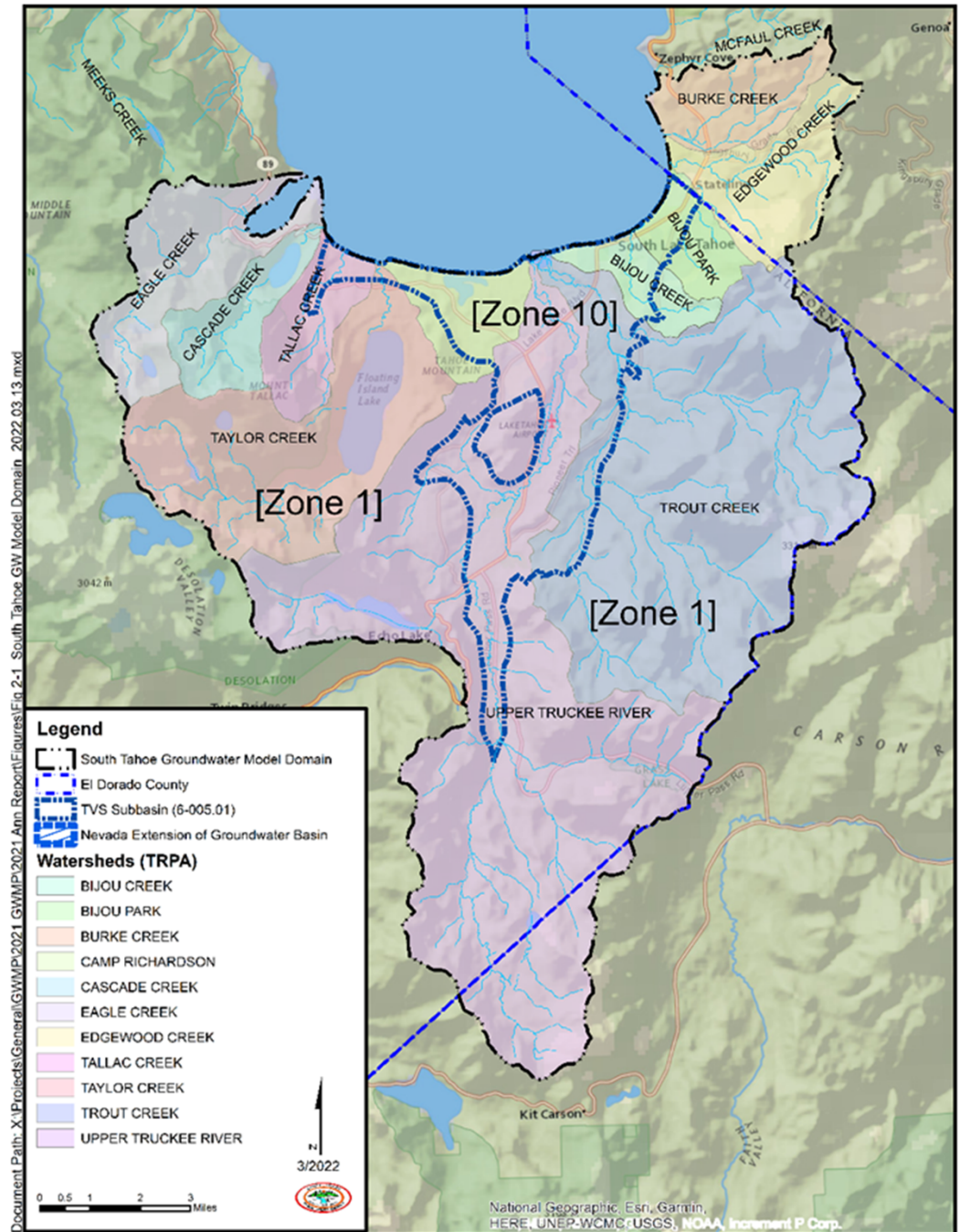
AGENDA

- * Basin Overview
- * Summary of WY2022 (Oct 1, 2021 – Sept 30, 2022) Conditions
- * WY2023 Precipitation Accumulation To Date



TVS SUBBASIN

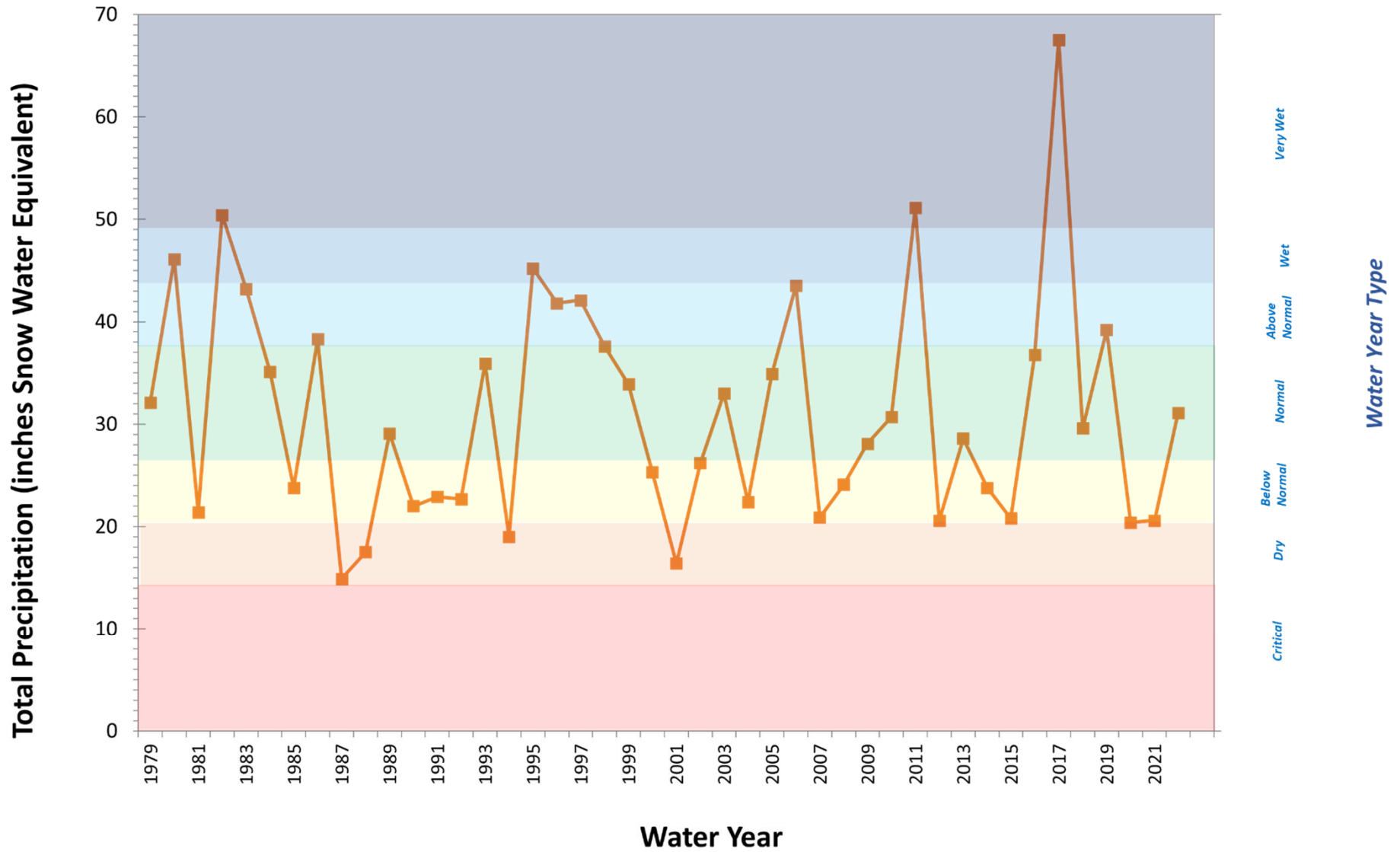
- * Elevations:
 - * Groundwater Basin:
 - * 6225- 6500 ft msl
 - * Mountain Block
 - * (> 6500 ft msl – Watershed Divide)
- * South Tahoe Groundwater Model (STGM)
 - * Mountain Block (Zone 1)
 - * TVS Subbasin (Zone 10)





TVS SUBBASIN WATER YEAR TYPE

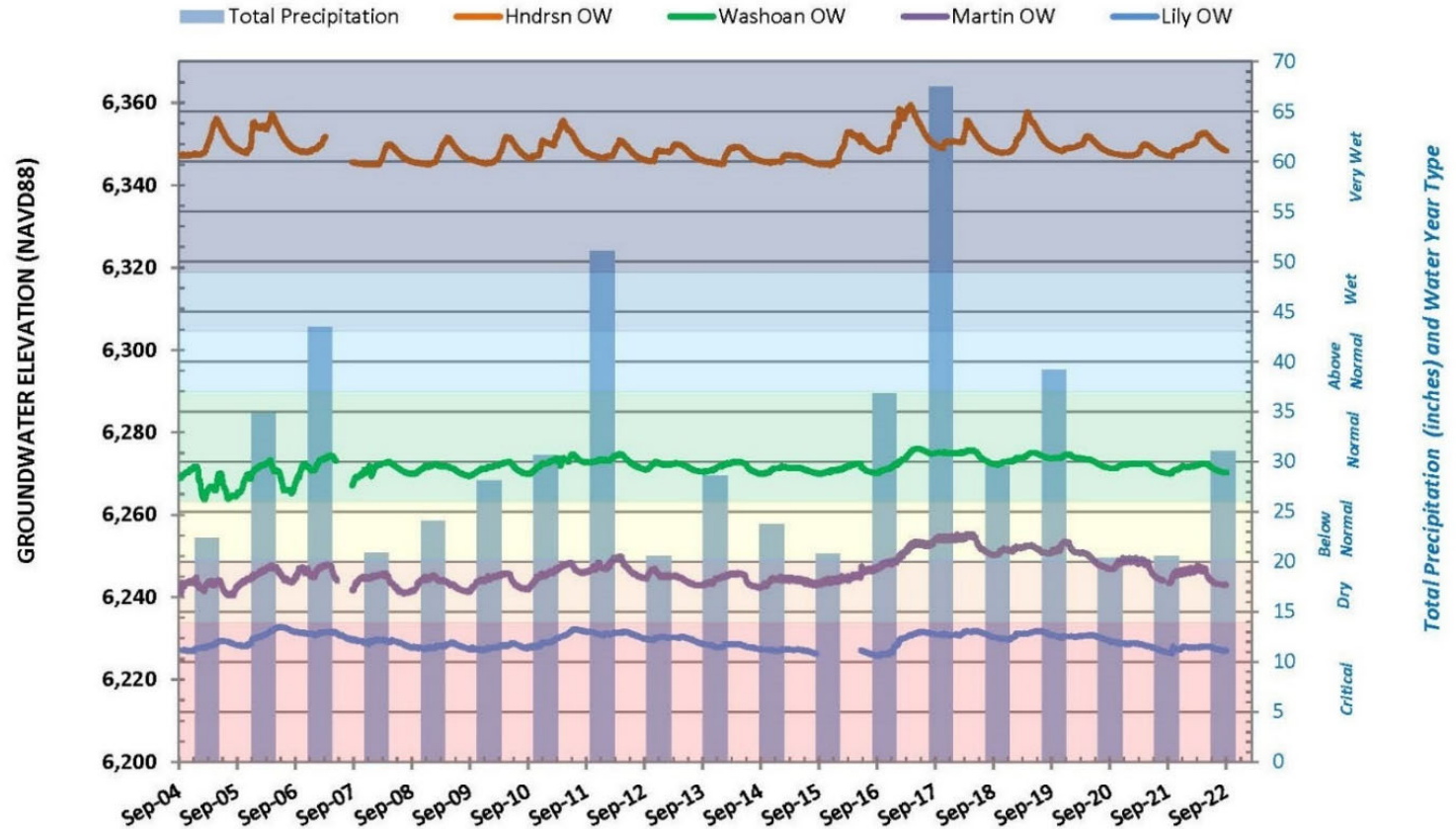
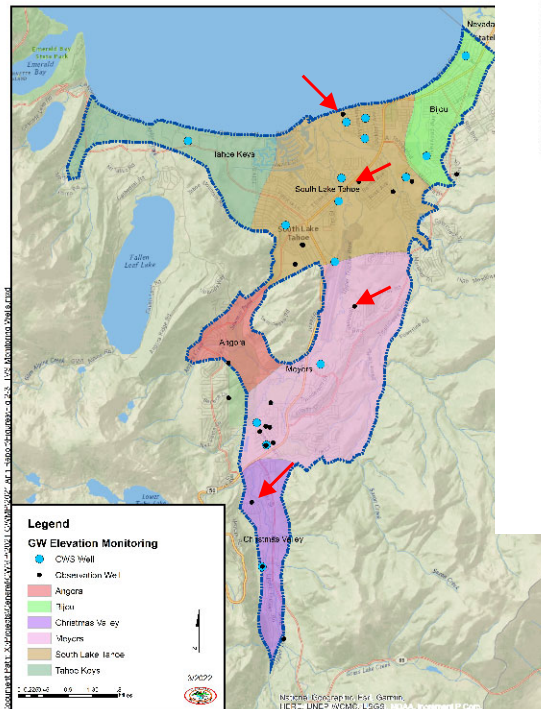
Snotel 508: Hagans Meadow, CA



Water Year 2022 had normal precipitation

GROUNDWATER LEVELS

TAHOE VALLEY SOUTH SUBBASIN
(6-005.01)



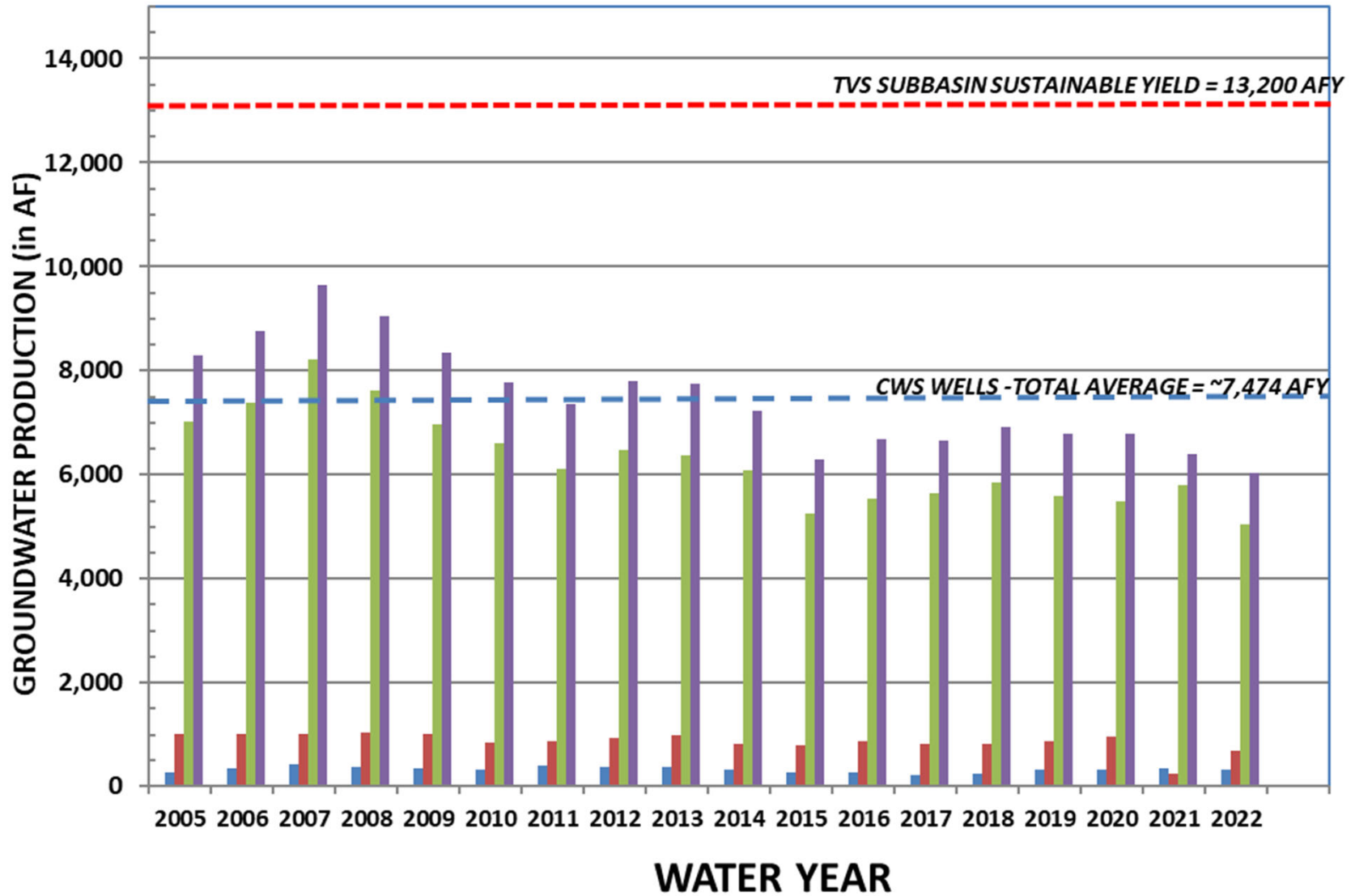
Measured water levels are generally stable over a range of hydrologic conditions





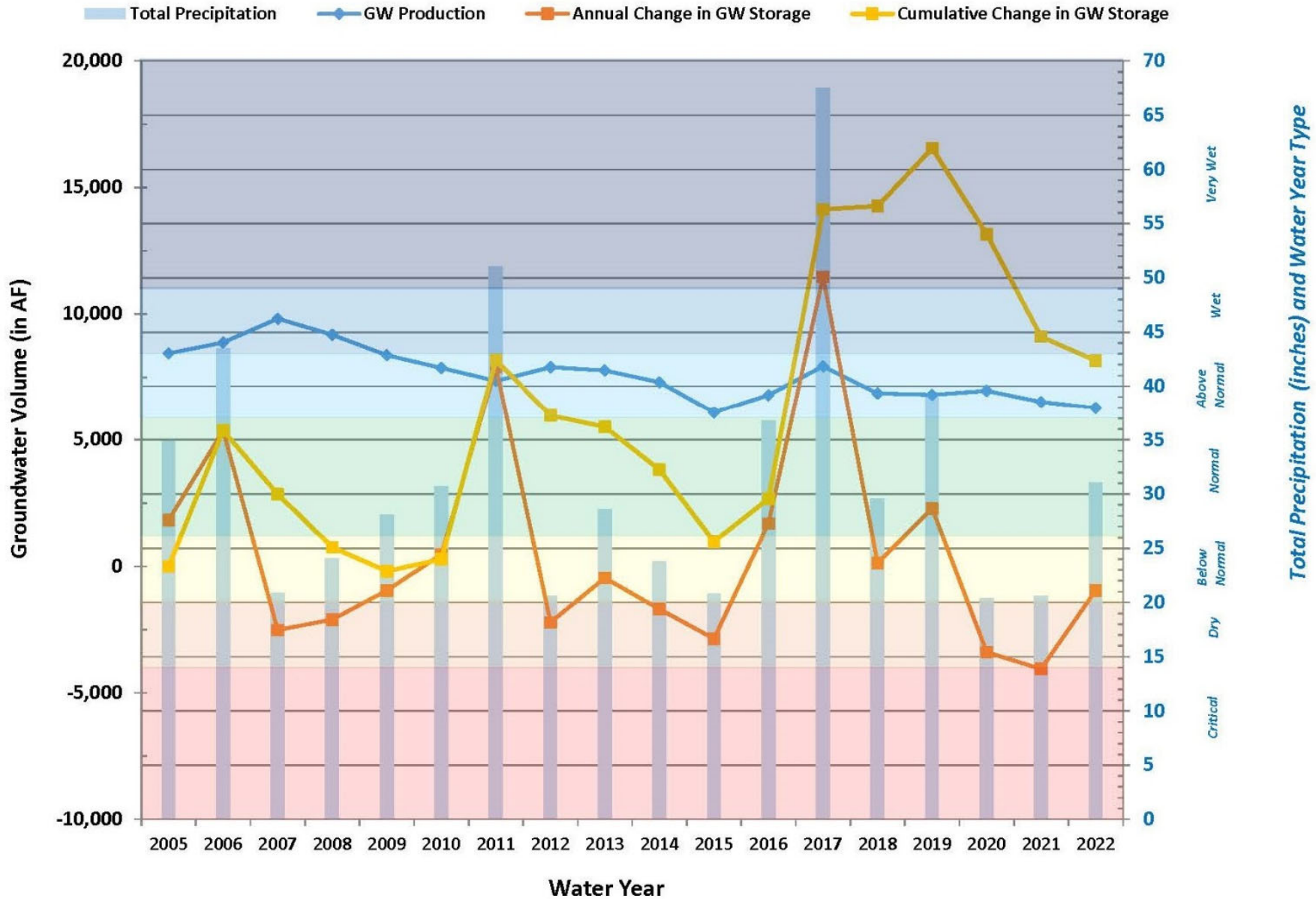
TVS Subbasin Community Water System Pumpage

■ LPA ■ LBWC ■ TKWC ■ STPUD ■ CWS WELLS - TOTAL





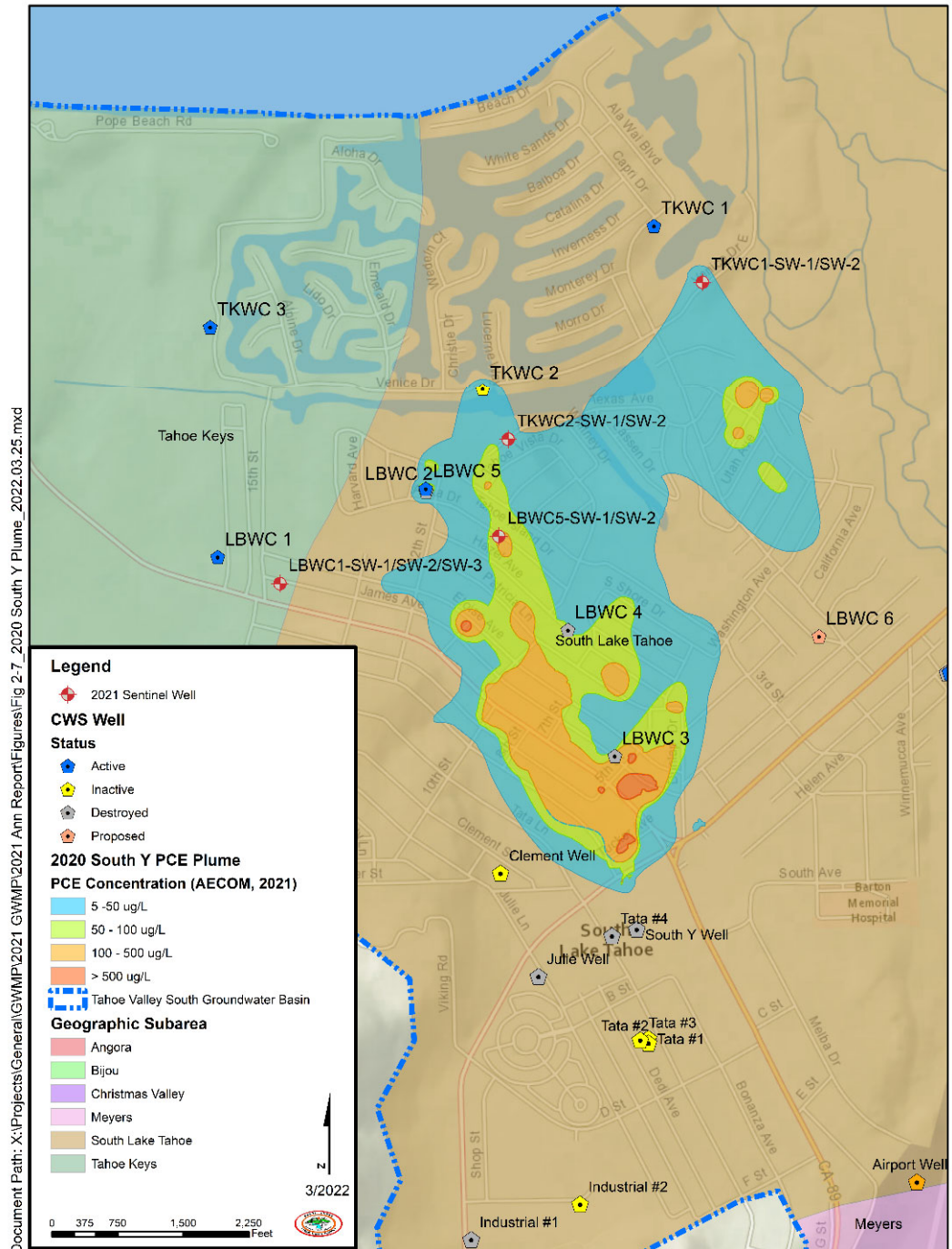
TVS SUBBASIN GROUNDWATER USE and STORAGE



Modeled GW Storage has increased with normal precipitation because of increased recharge

Degraded Groundwater Quality

- * Oct 2021 /April 2022 Sentinel Well Monitoring
- * PCE @ TKWC 1 –SW-1 = 120 ppb
- * PCE @ TKWC 2 –SW-1 = 43 ppb
- * PCE @ LBWC 1 –SW-1 = ND
- * LBWC 5 –Sw-3 = 160 ppb
- * LRWQCB Soil gas sampling
- * Arsenic still present
- * Uranium/Gross alpha activity
- * Treatment at TKWC 2 and 3



Accomplishments (WY 2022)

- * Fulfilled Alternative Annual Reporting Requirements (SGMA)
- * Fulfilled GW Elevation Monitoring Requirements (CASGEM)
- * Collaboration with the Alternative Plan Stakeholders Advisory Group
- * Alternative Plan Submitted April 2022
 - * Updated the South Tahoe Groundwater Model (STGM)
 - * Conducted administrative, technical, and public engagement tasks
- * Public Outreach
 - * Documents posted to Groundwater Web Page
 - * Board Meeting Presentations/Updates (November 2021)
 - * SAG Workshops (January and August 2022)



Proposed Actions (WY 2023)

- * On-Going:
 - * Monitor regulations and BMP guidance
 - * Monitor basin conditions & groundwater supplies
 - * Update and Maintain the STGM
 - * Collaborate with EDWA & SAG
 - * Public Outreach
 - * Support Annual Water Supply and Demand Assessment (WSDA)
- * New (Planned):
 - * Apply for Round 2 SGM Grant Funding (*complete in Dec 2022*)
 - * Evaluate potential new shallow groundwater Monitoring Locations (ISWs, GDEs)
 - * Implement Actions adopted in the Alternative Plan



Comments and Questions

